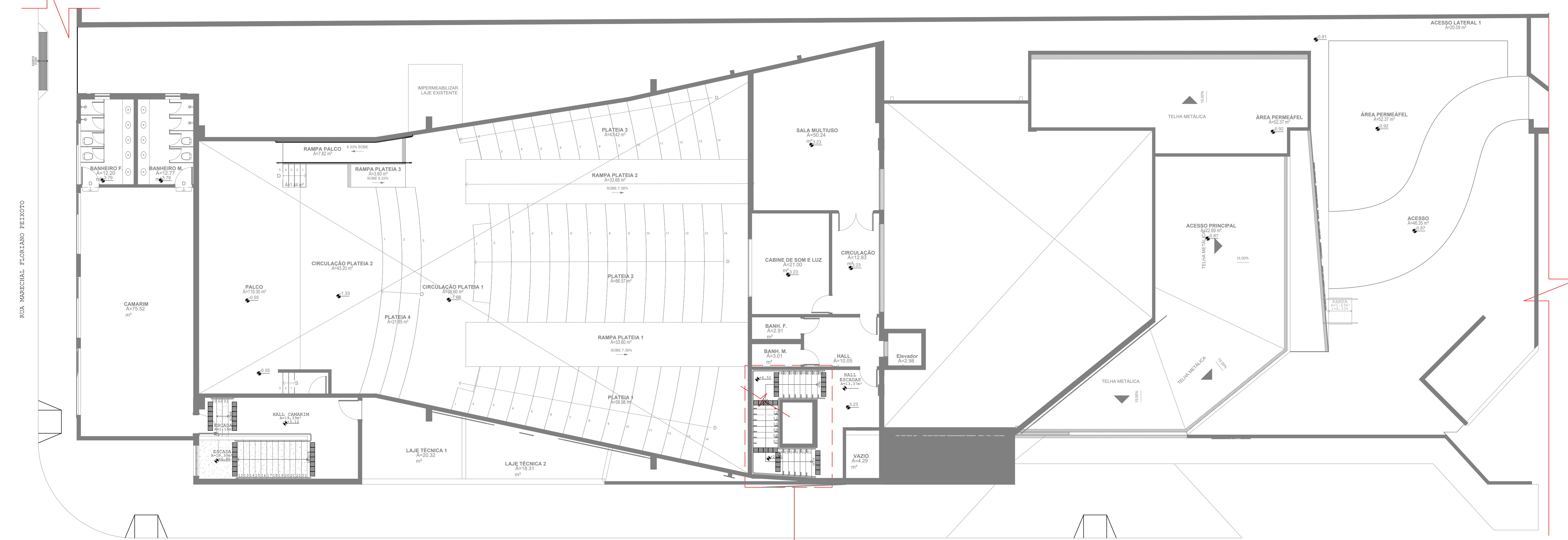


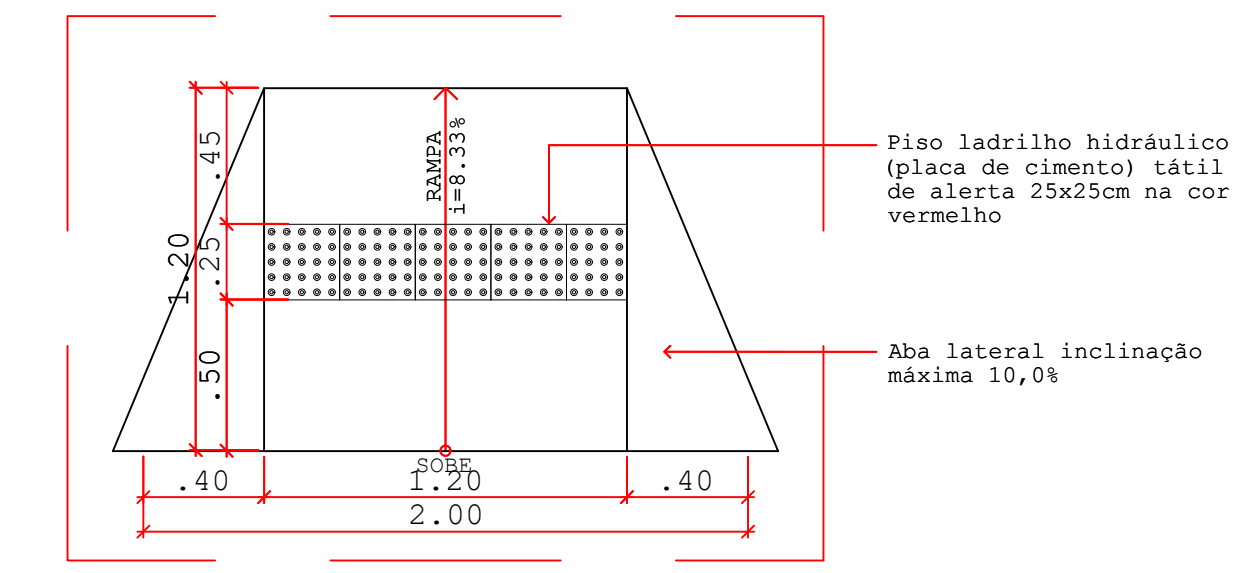
PLANTA BAIXA TÉCNICA - PAV. TÉRREO

ESC. 1/100



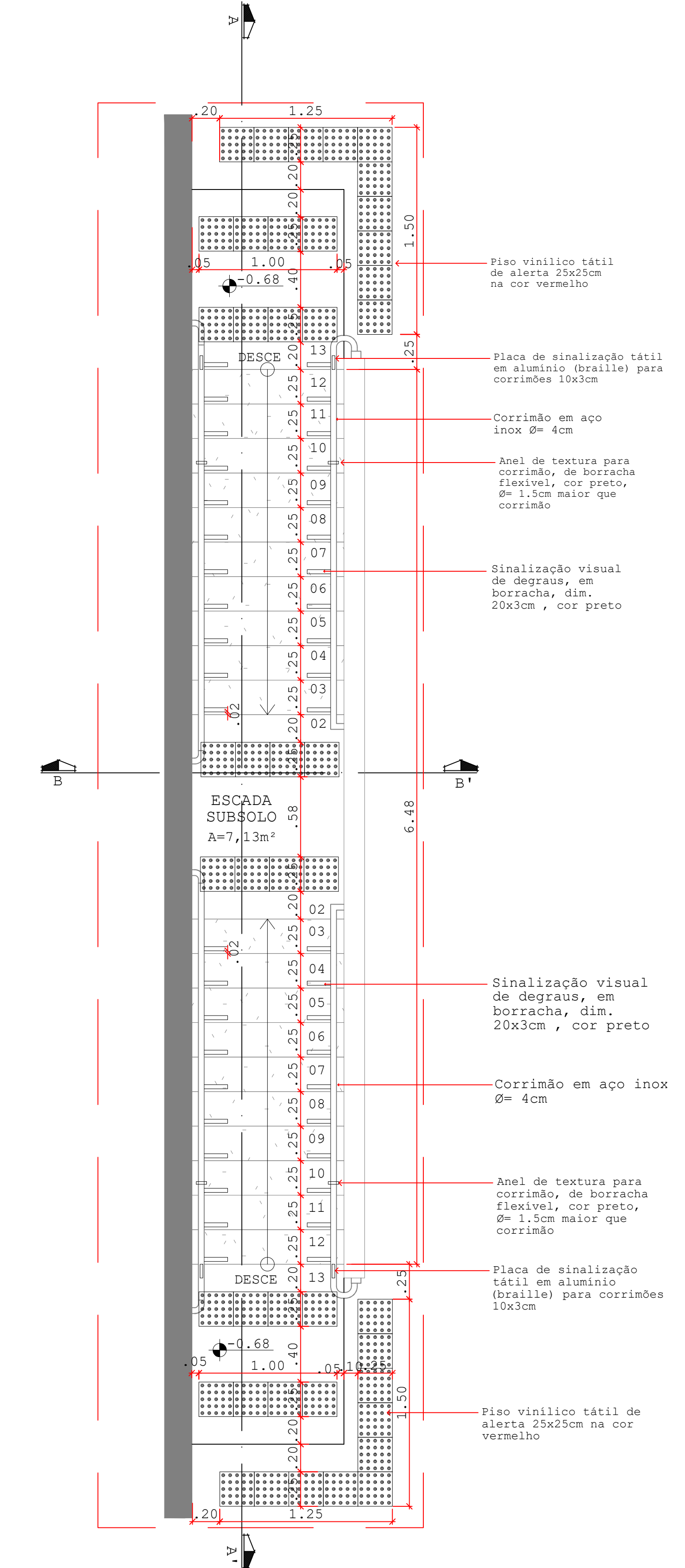
PLANTA BAIXA TÉCNICA - 1º PAVIMENTO

ESC. 1/100



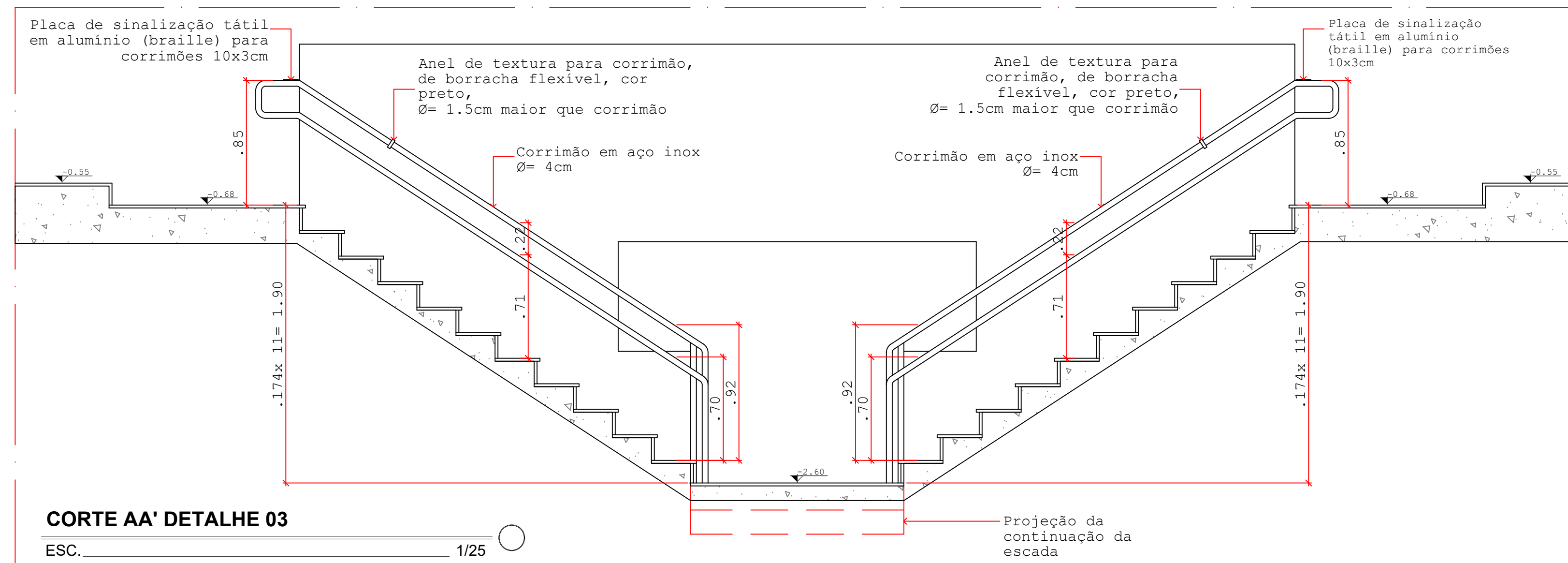
PLANTA BAIXA DETALHE 01

ESC. 1/25



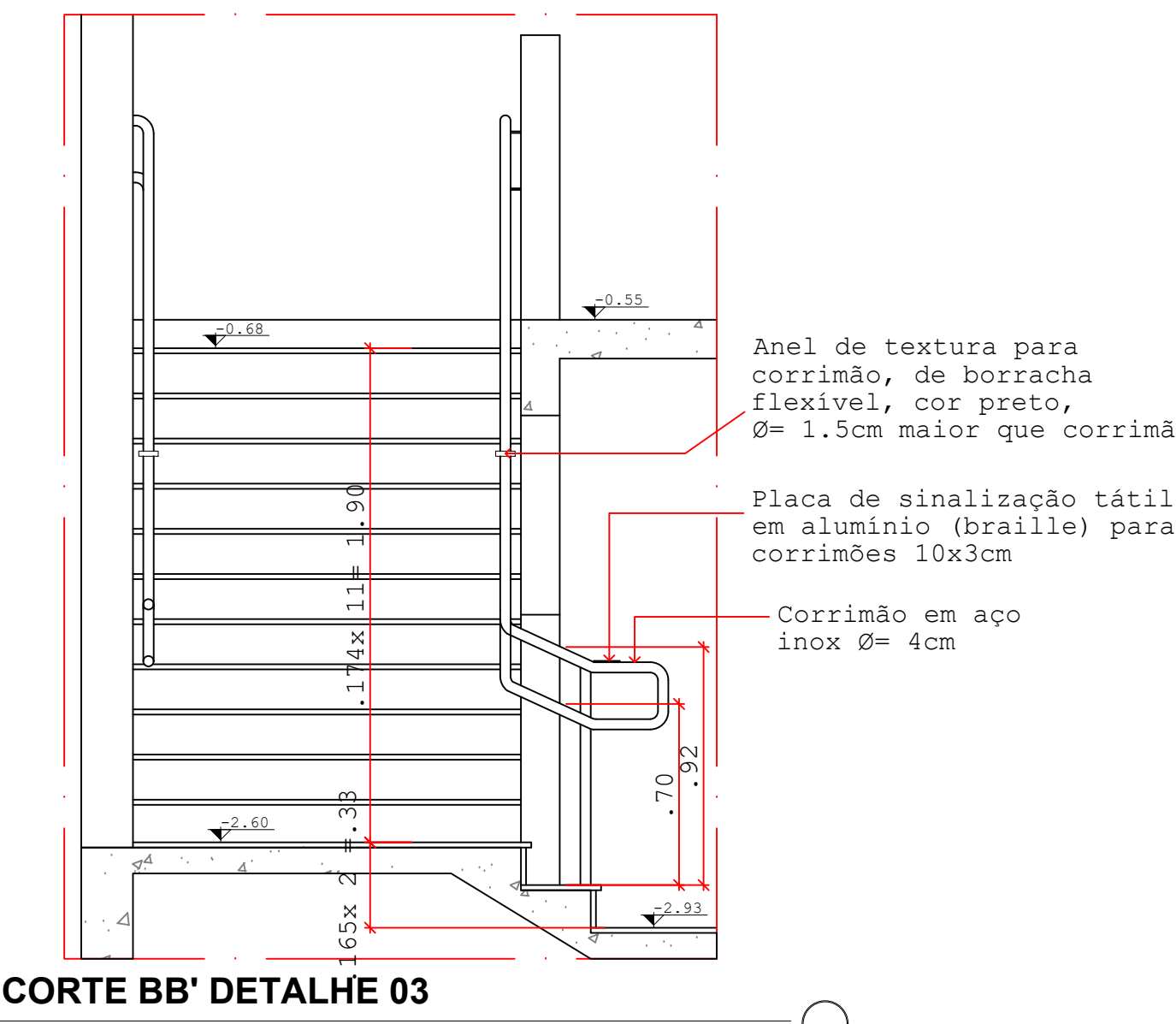
PLANTA BAIXA DETALHE 03

ESC. 1/25



CORTE AA' DETALHE 03

ESC. 1/25



CORTE BB' DETALHE 03

ESC. 1/25

**ABRANGENTE**  
ENGENHARIA & ARQUITETURA

**PROJETO EDUCACIONAL**  
ACESSIBILIDADE  
PLANTA BAIXA TÉRREO E 1º PAVIMENTO, DETALHE 01 E 03

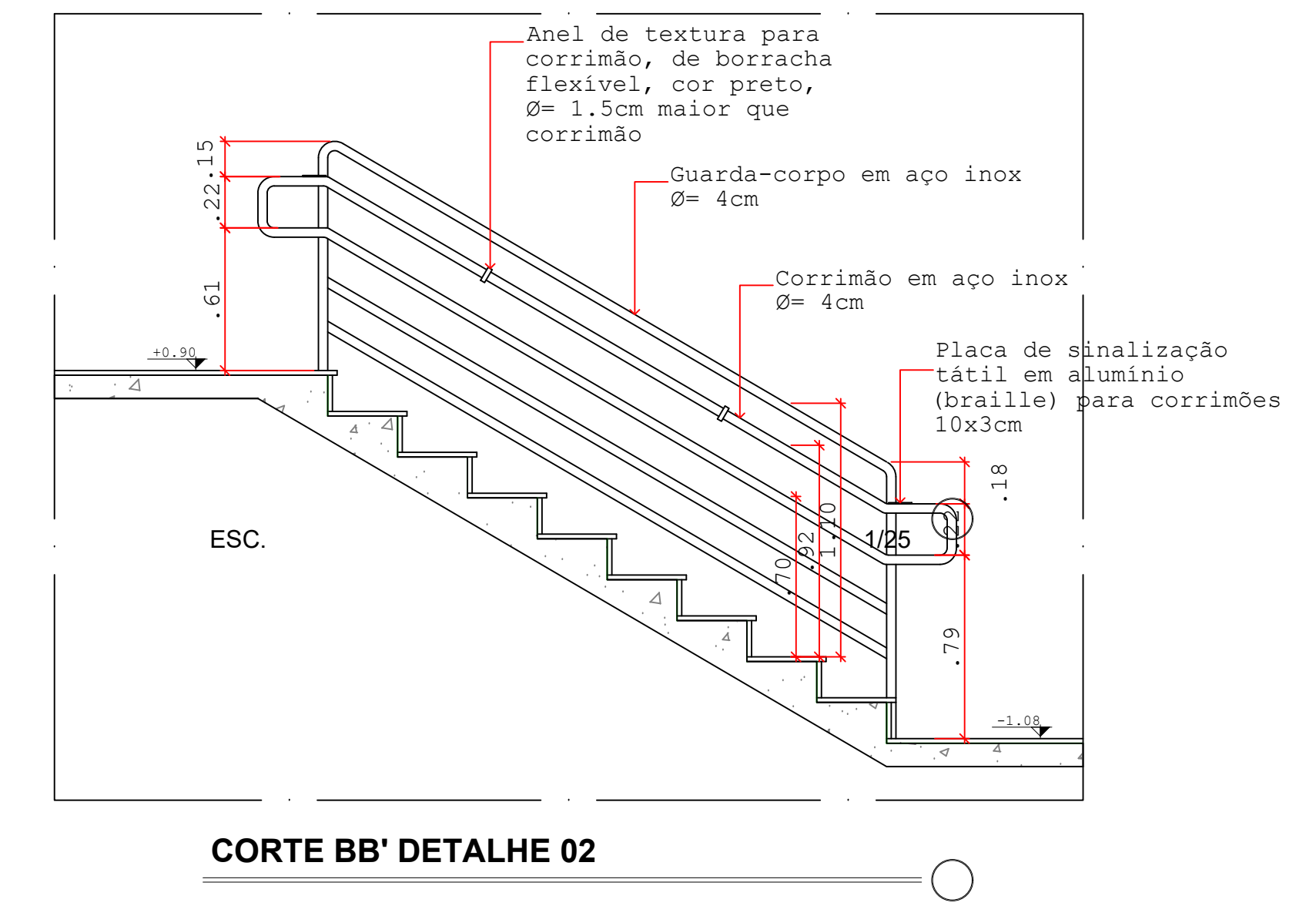
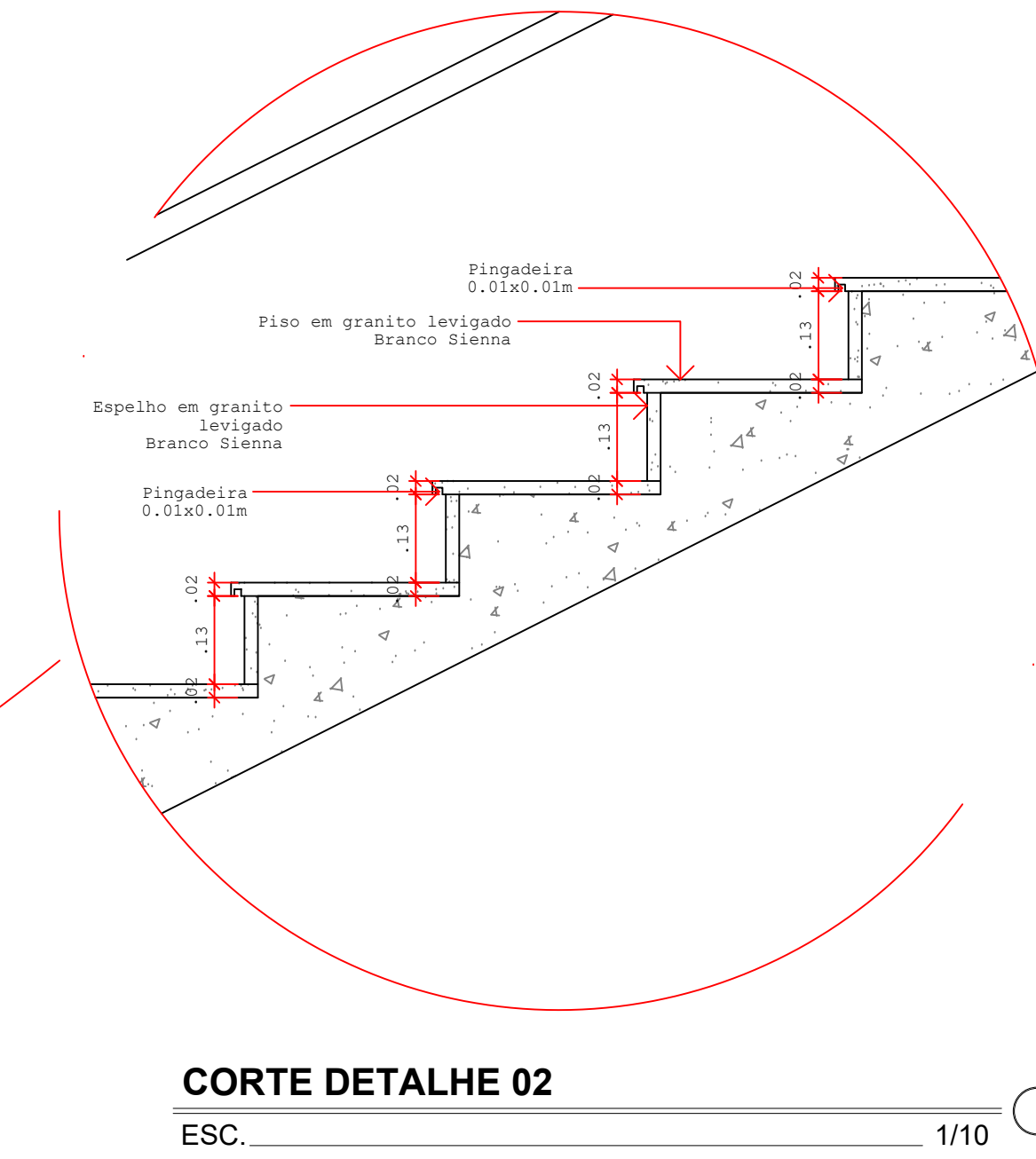
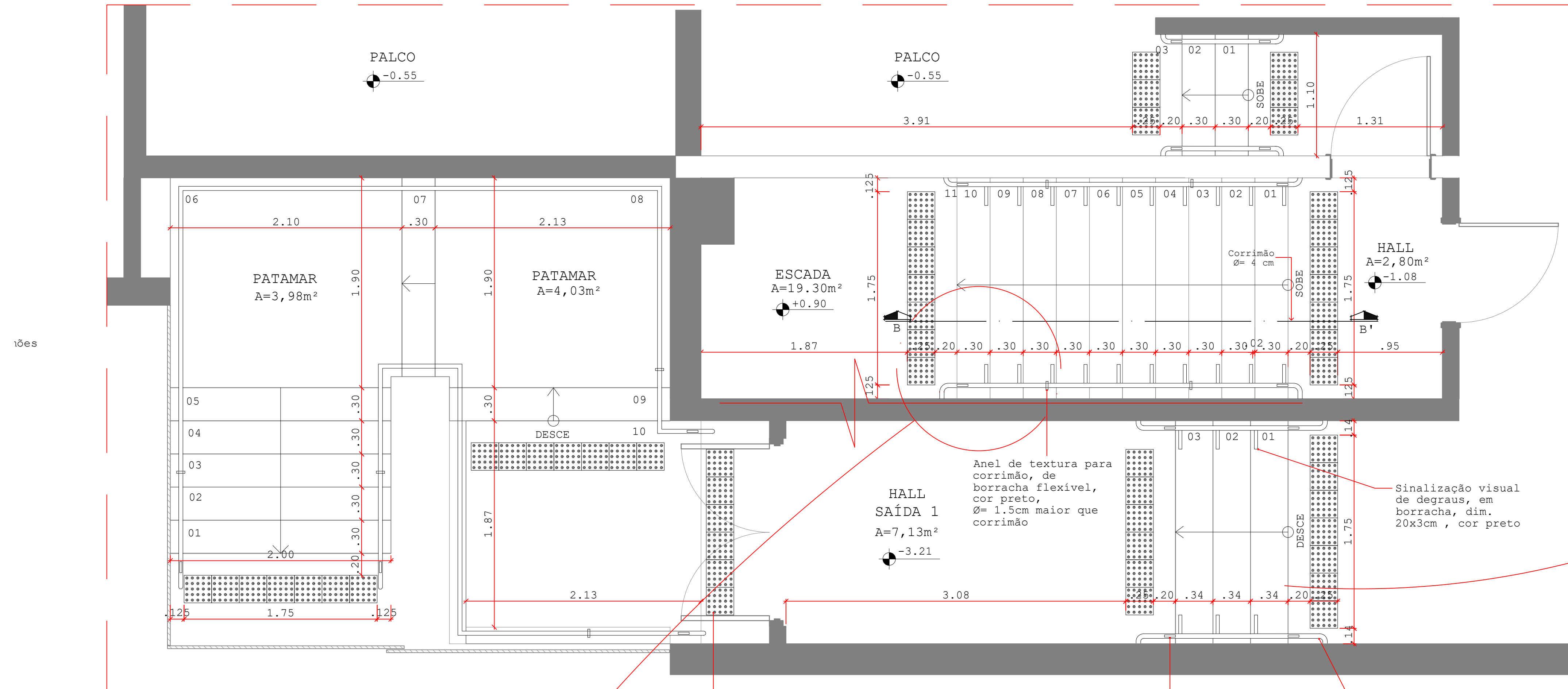
INDICADA SETEMBRO/2015

ESCALA	DATA	COD. OBRA	DISCIPLINA	FASE	REVISÃO	COLABORADOR
				ACES.	PE	R02
INDICADA	SETEMBRO/2015	FMT-CUABA	ACES.	PE	R02	ALESSANDRA SALDANHA

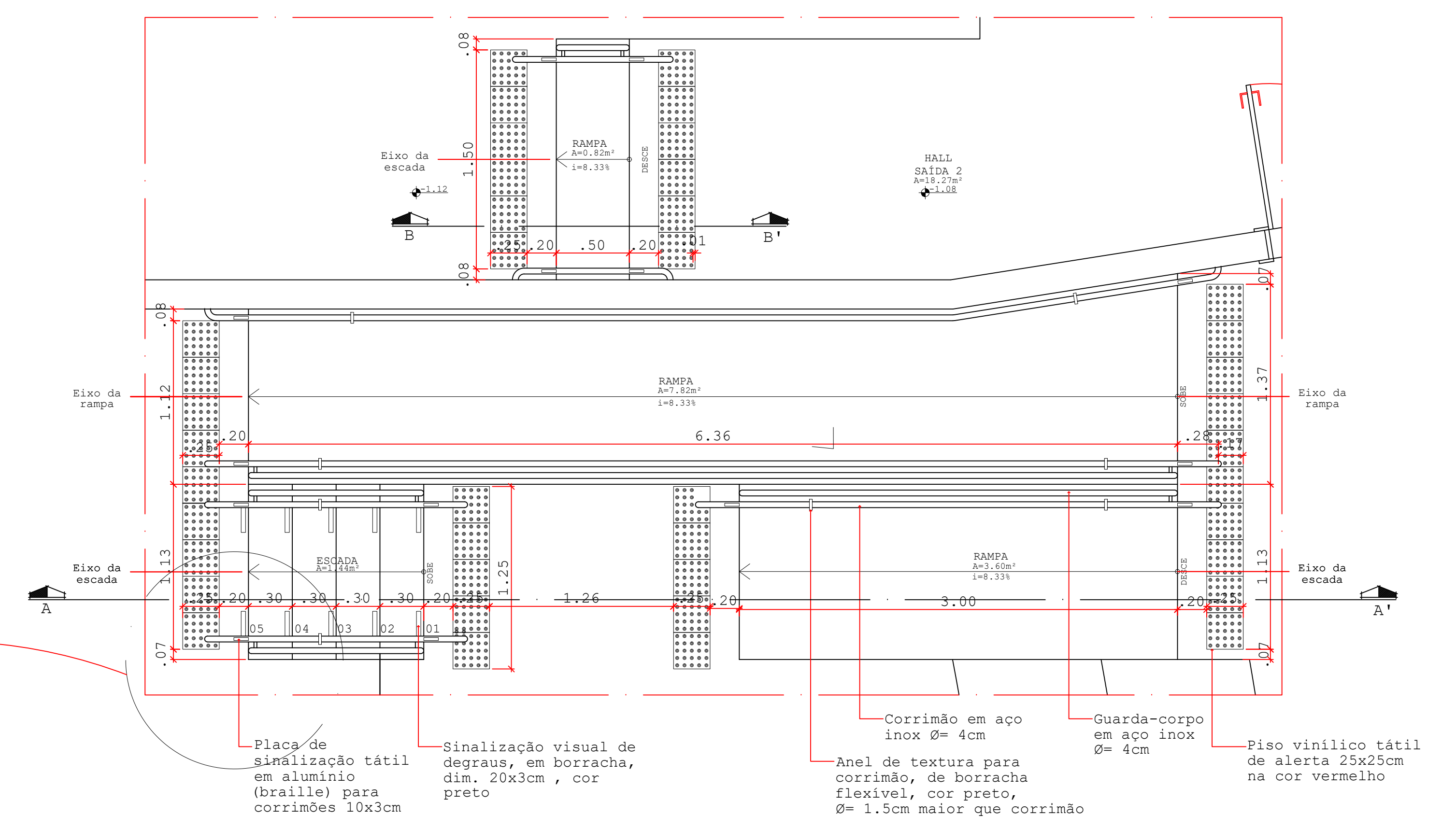
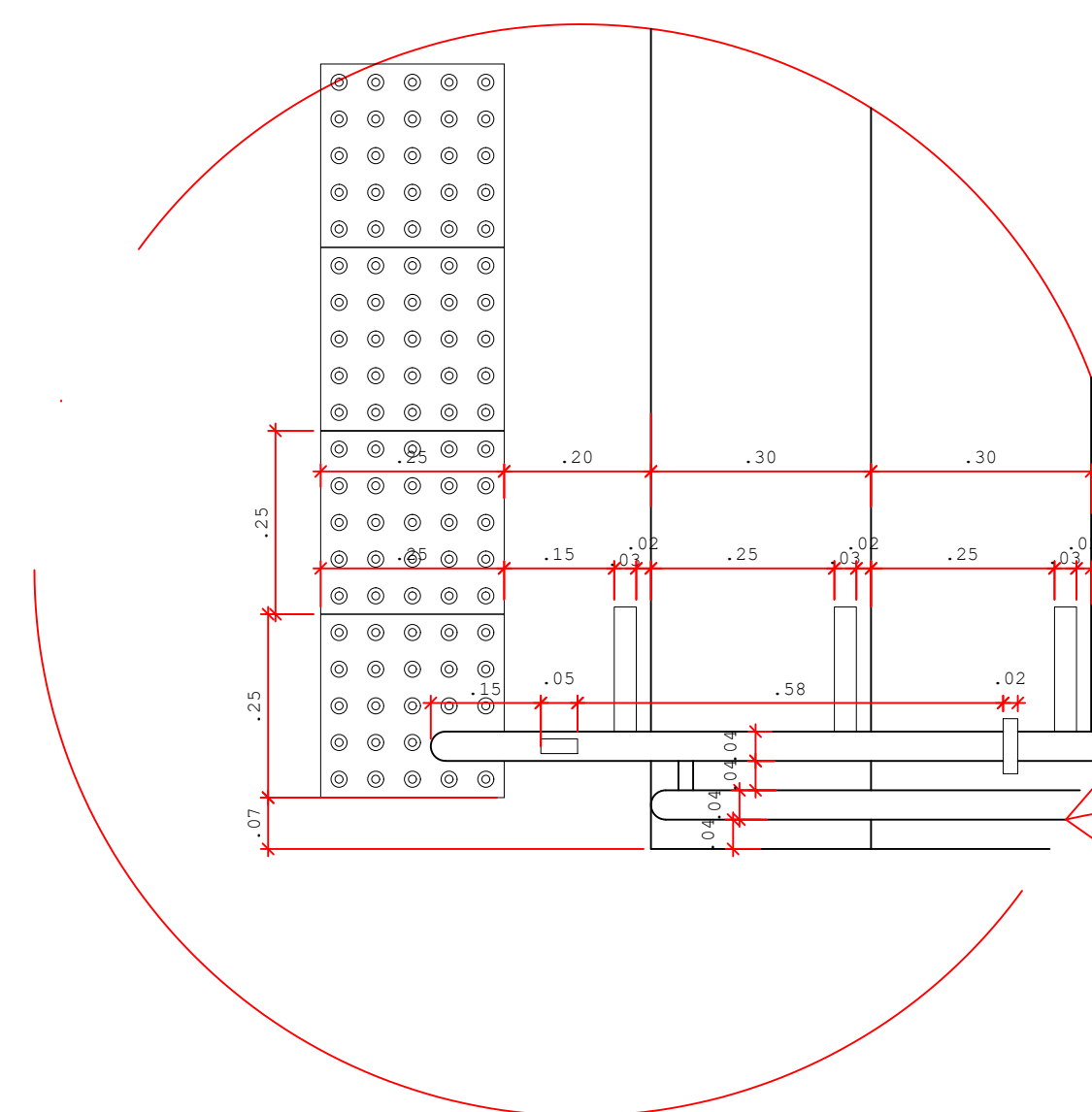
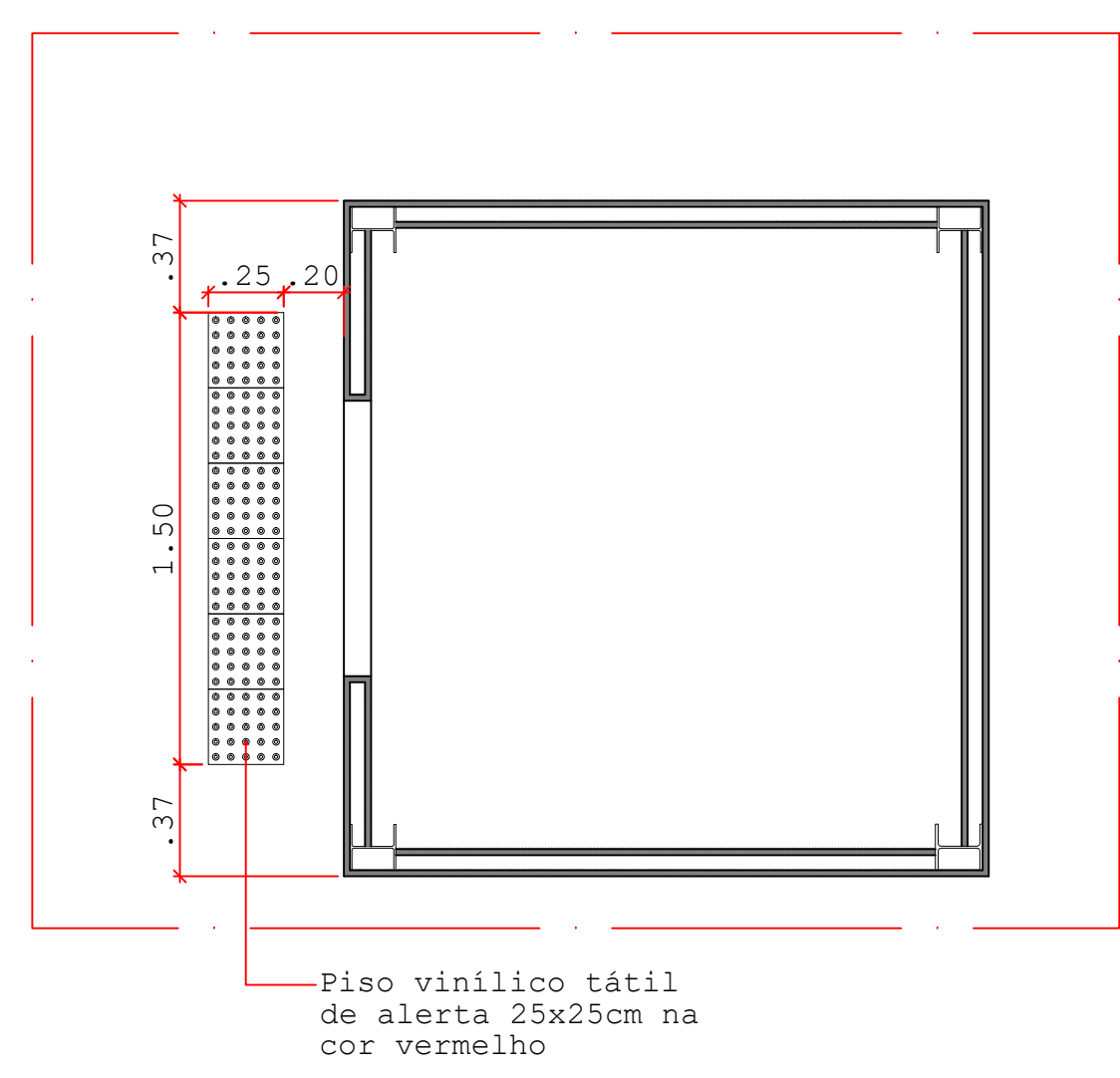
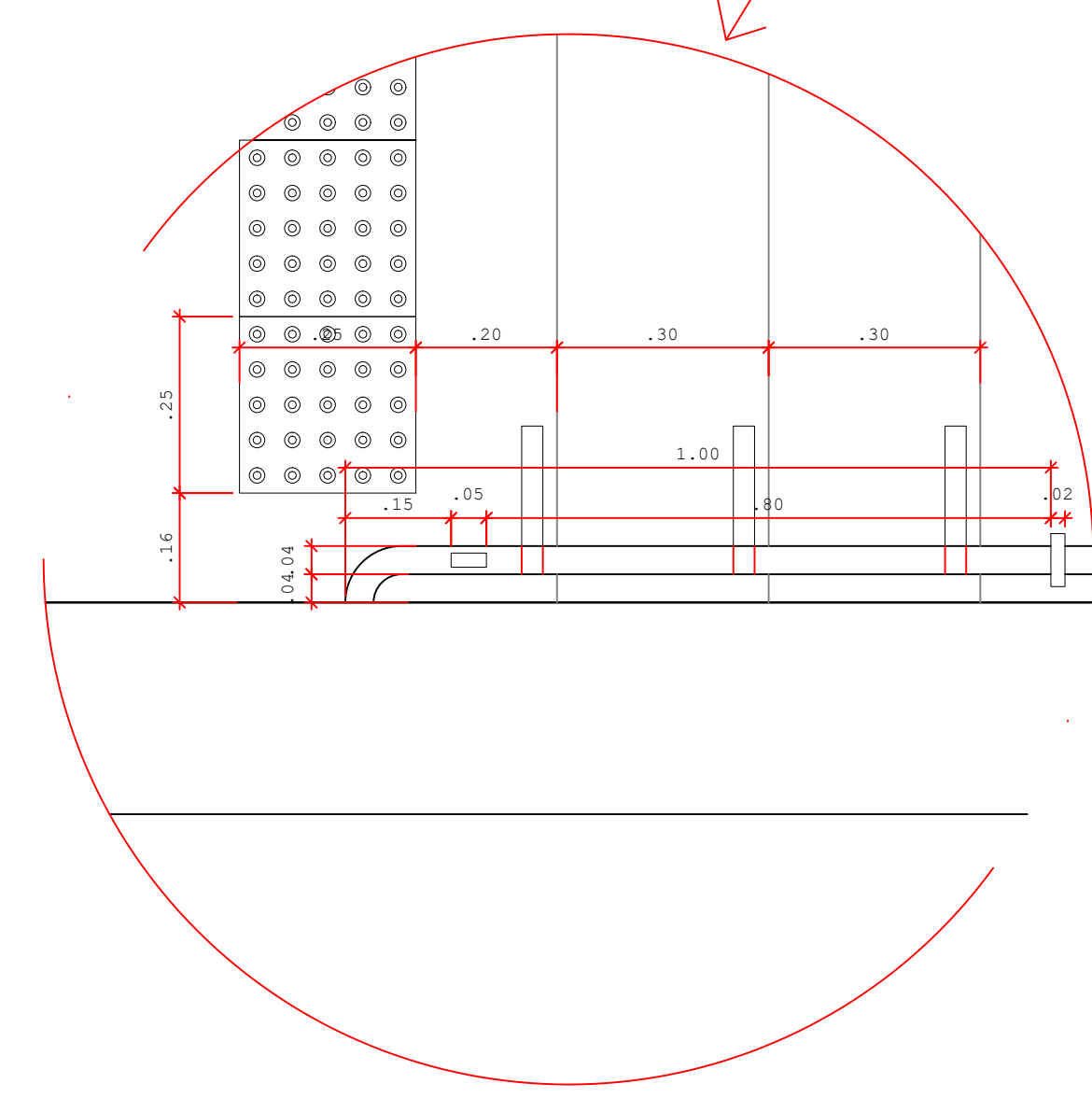
FOLHA 01/03

Fone/Fax: 65 3644 9974  
projeto.abrangente@gmail.com  
www.abrangente.com.br





**PLANTA BAIXA DETALHE 02**  
ESC. 1/25

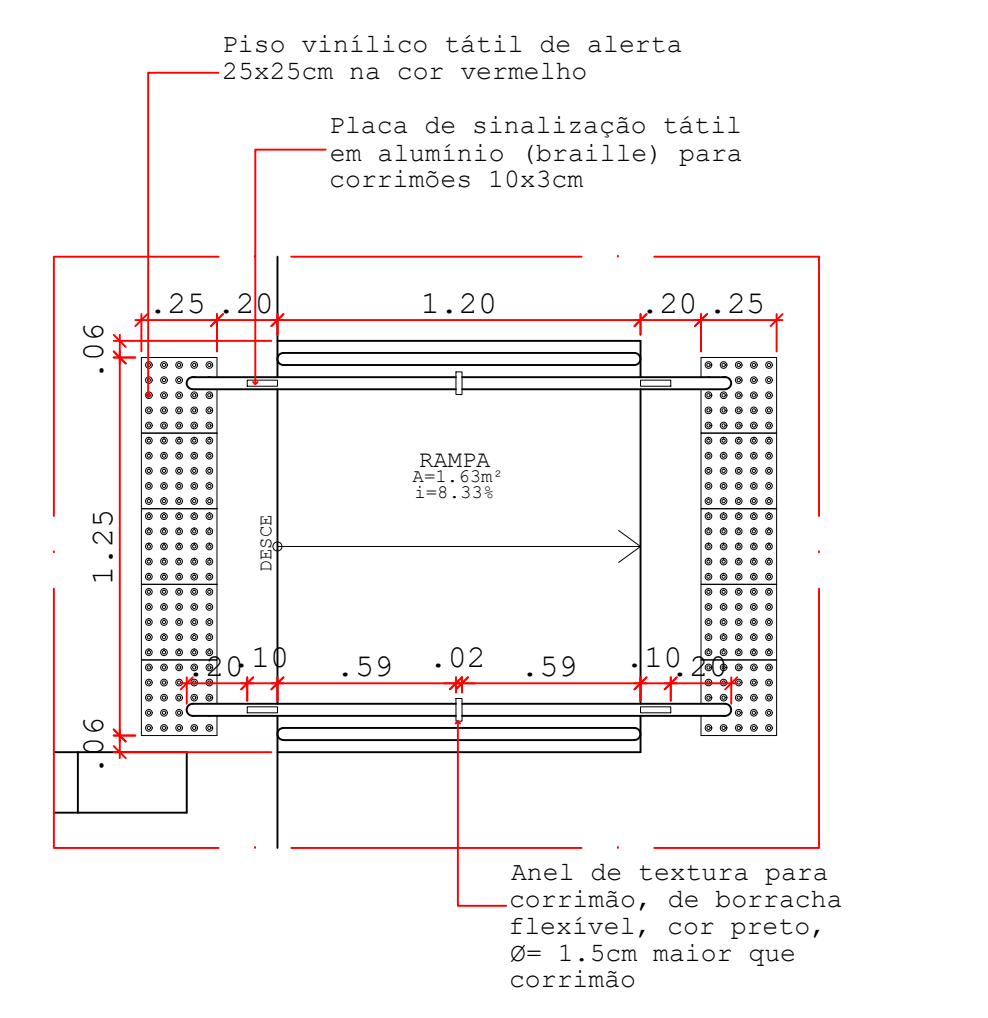
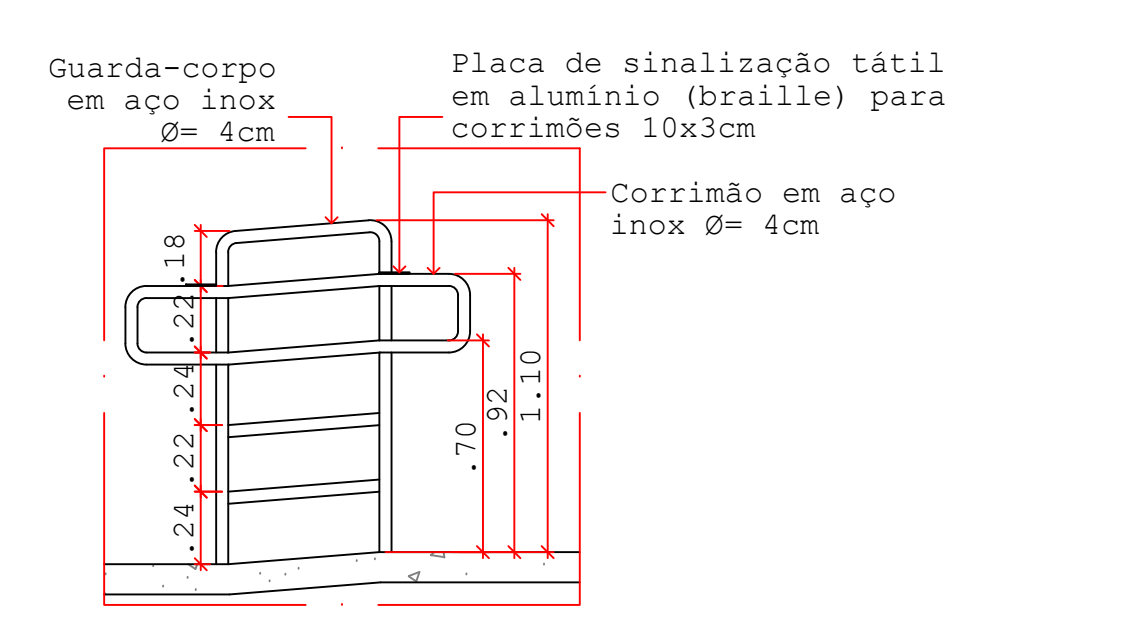
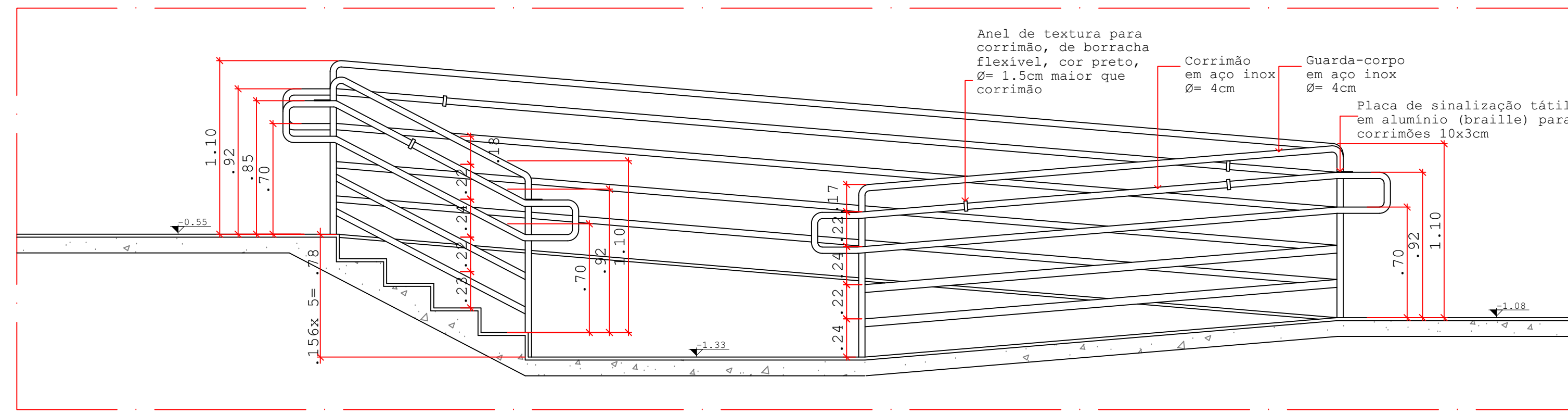


**PLANTA BAIXA DETALHE 02**  
ESC. 1/10

**PLANTA BAIXA DETALHE 07**  
ESC. 1/25

**PLANTA BAIXA DETALHE 04**  
ESC. 1/25

**PLANTA BAIXA DETALHE 04**  
ESC. 1/25

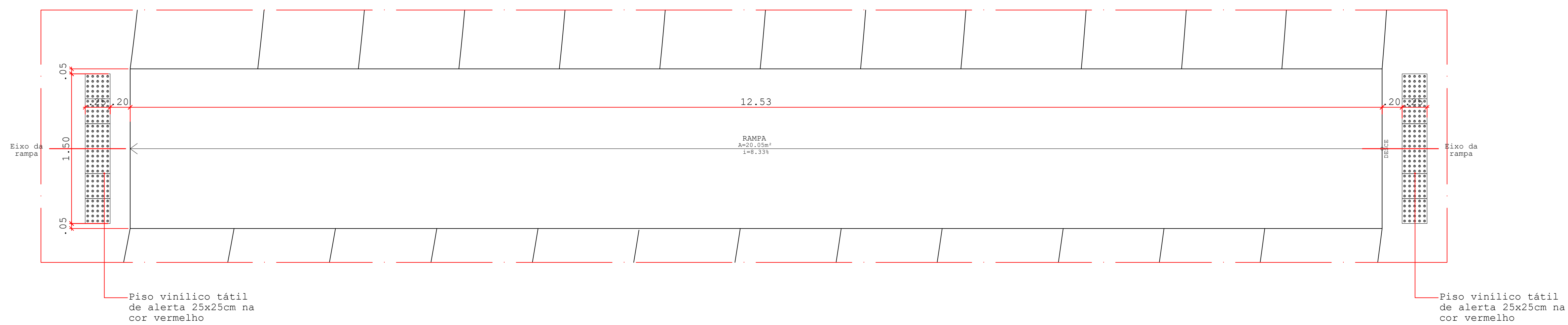


**CORTE AA' DETALHE 04**  
ESC. 1/25

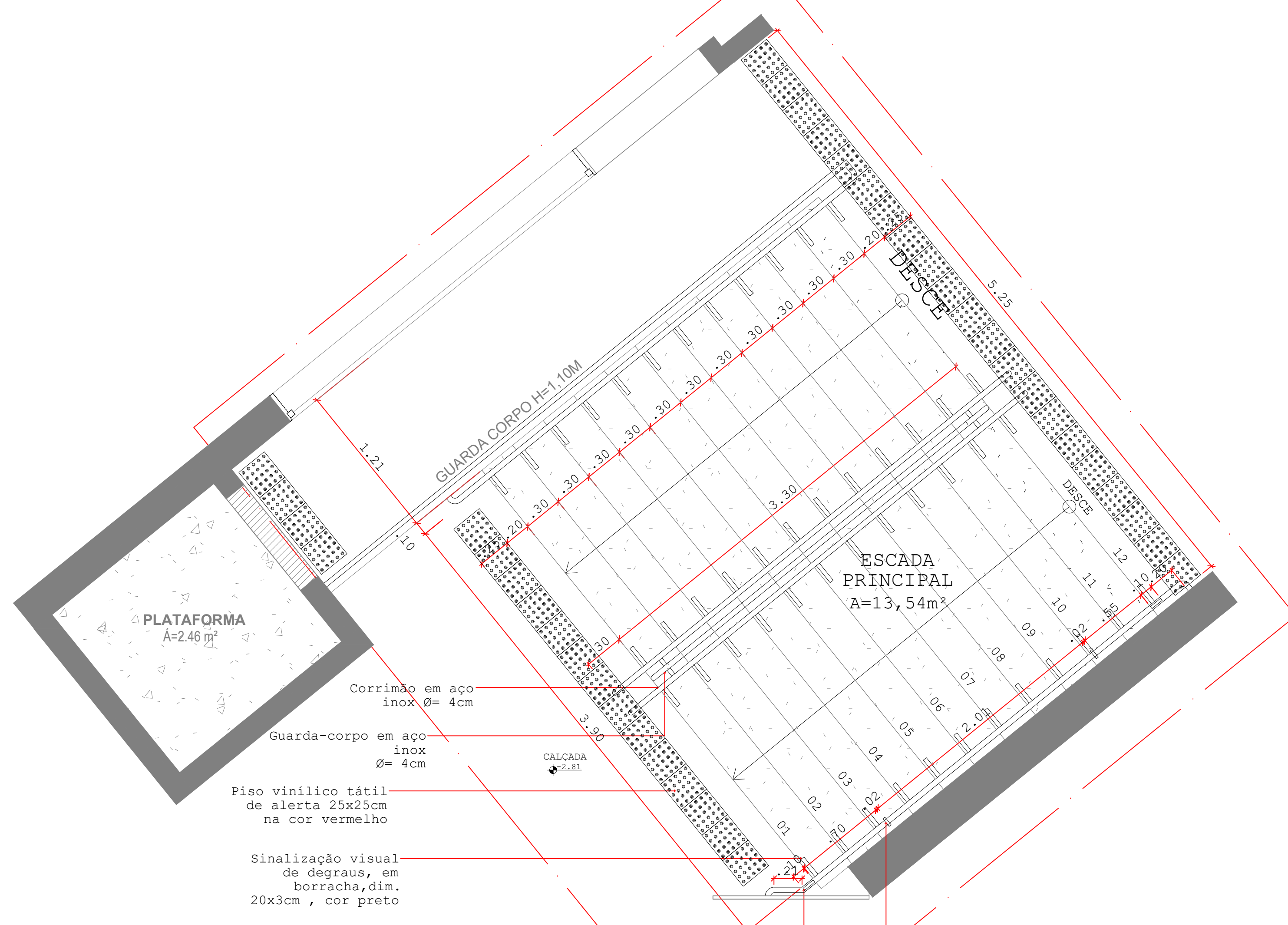
**CORTE BB' DETALHE 04**  
ESC. 1/25

**PLANTA BAIXA DETALHE 11**  
ESC. 1/25

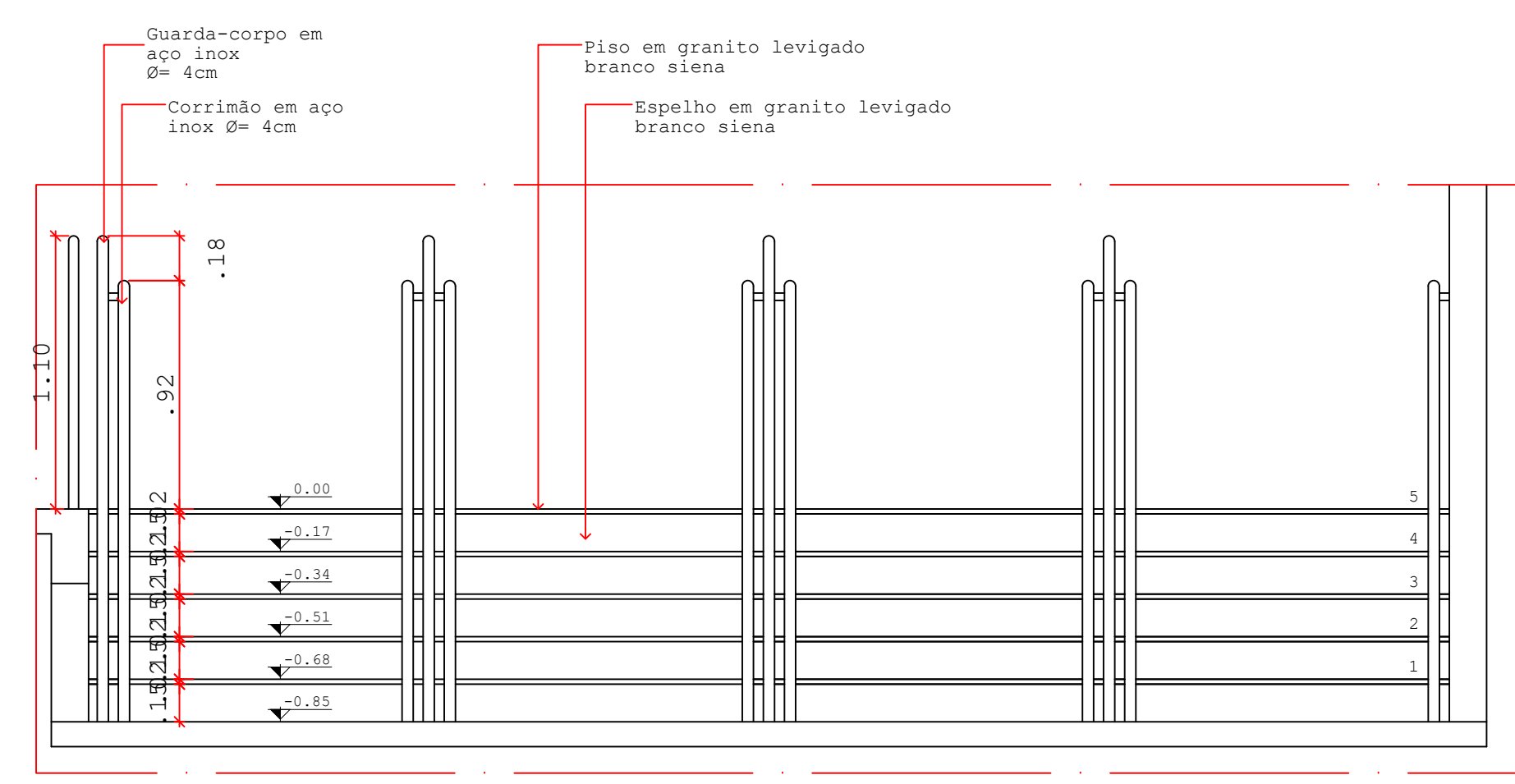




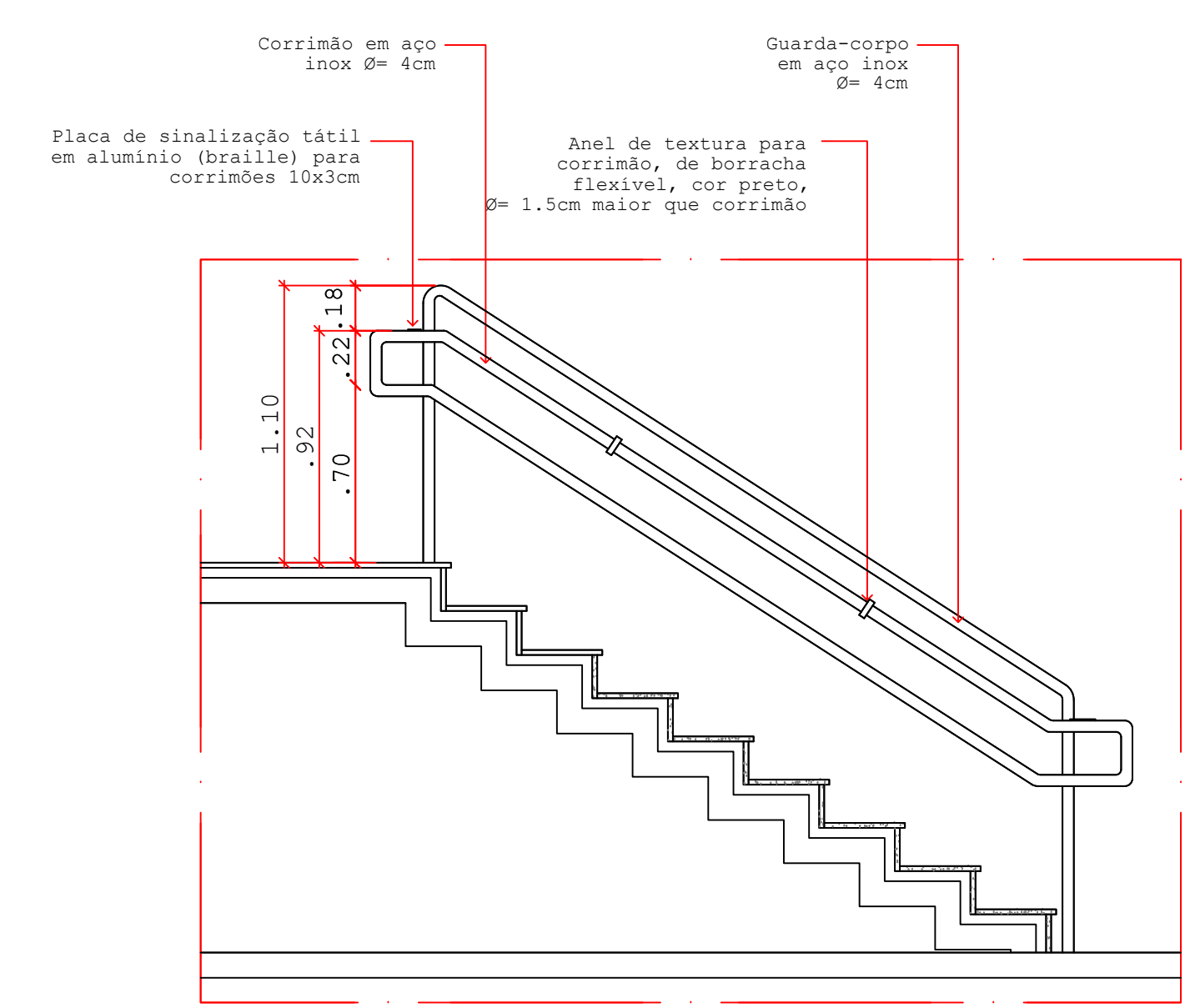
**PLANTA BAIXA DETALHE 05**  
ESC. 1/25



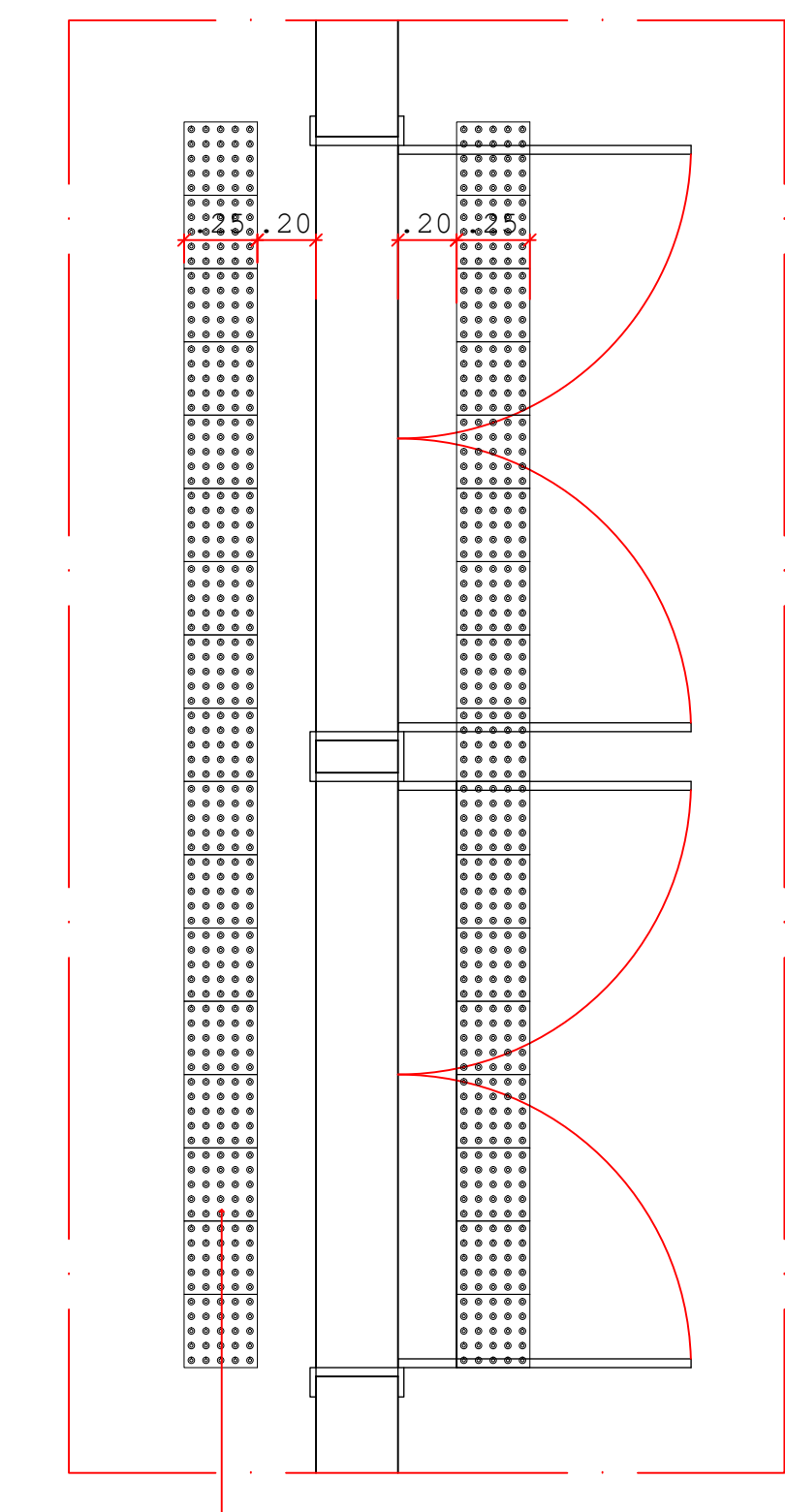
**PLANTA BAIXA DETALHE 10**  
ESC. 1/25



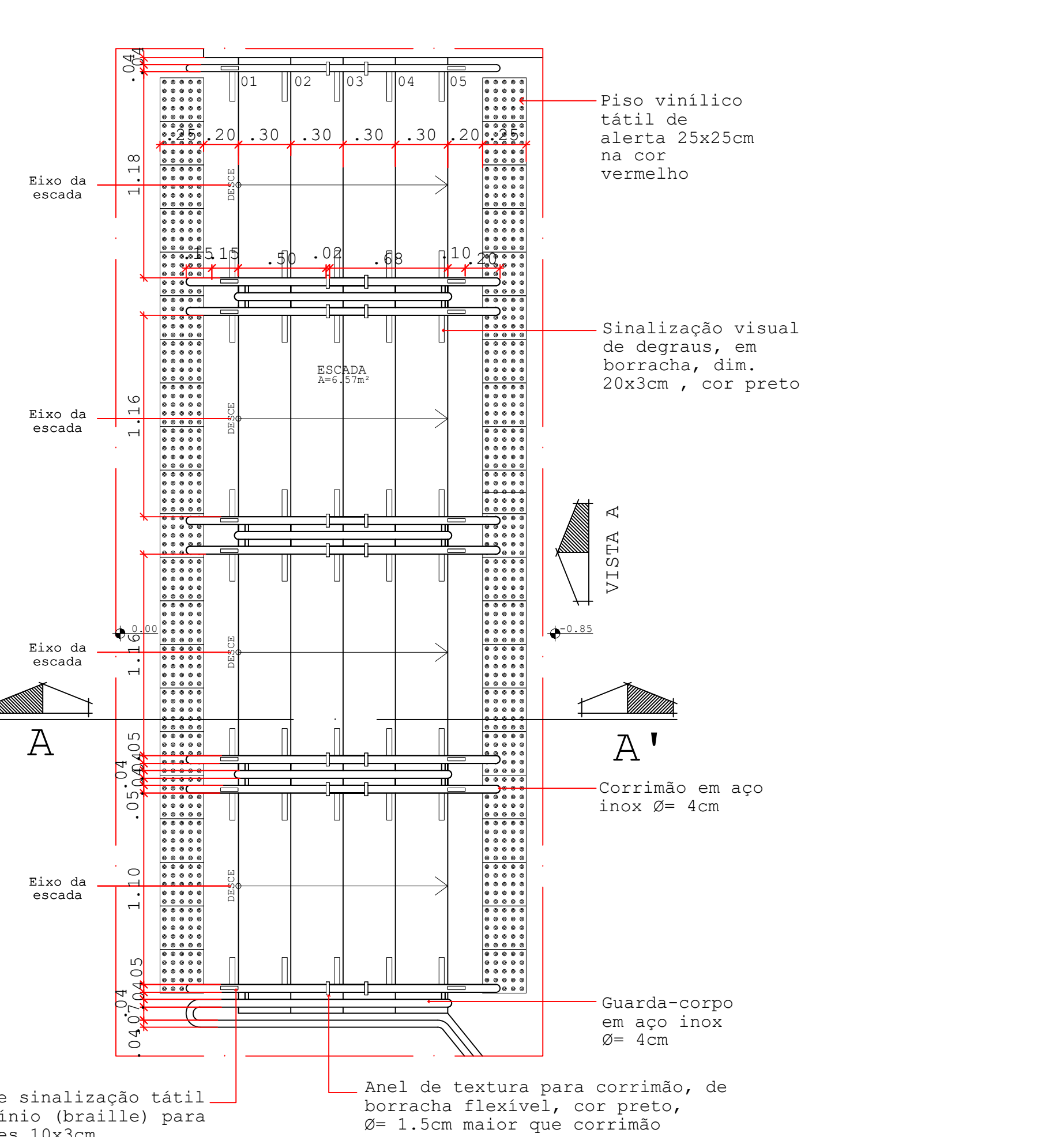
**VISTA A DETALHE 09**  
ESC. 1/25



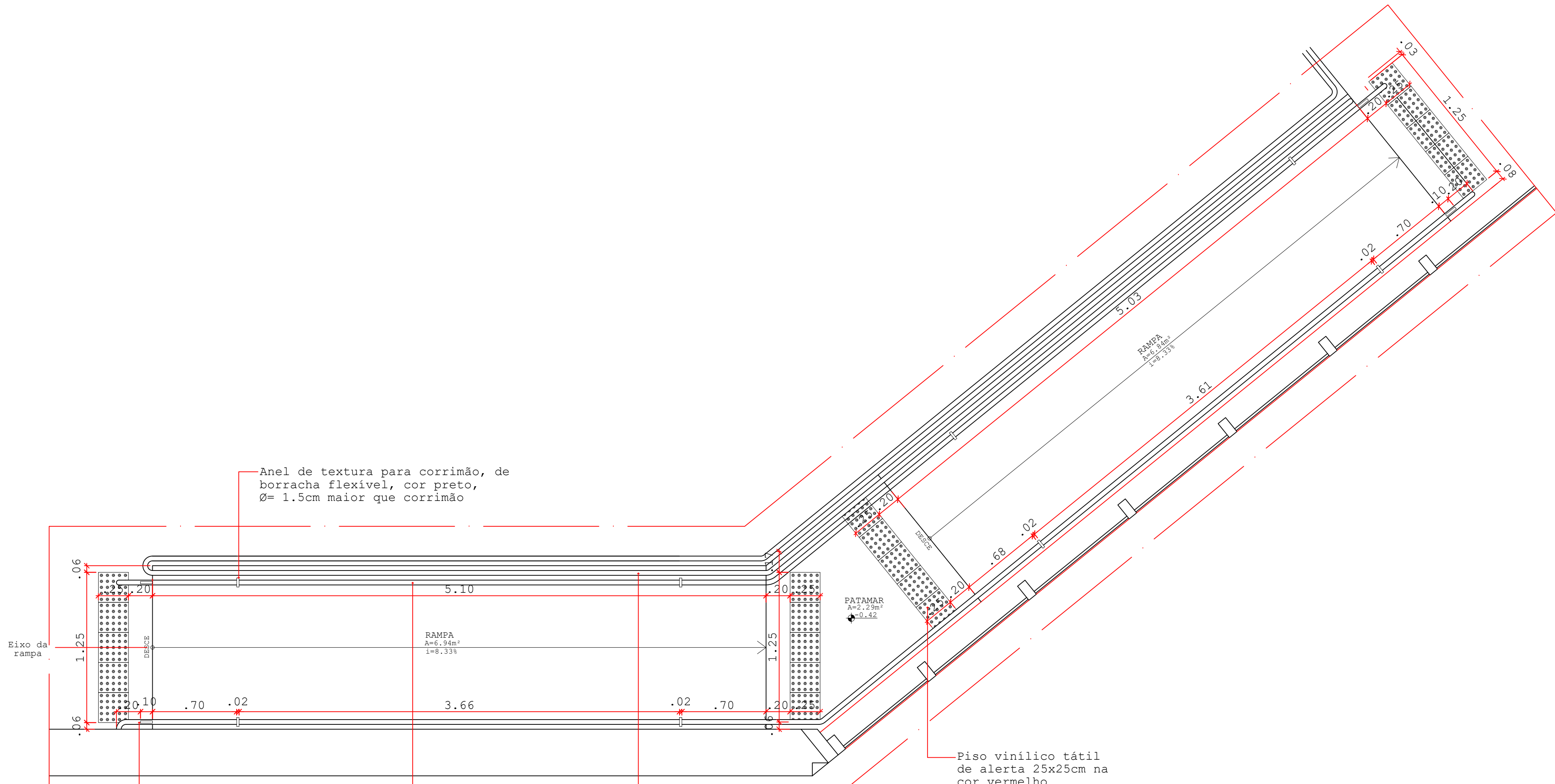
**CORTE AA' DETALHE 09**  
ESC. 1/25



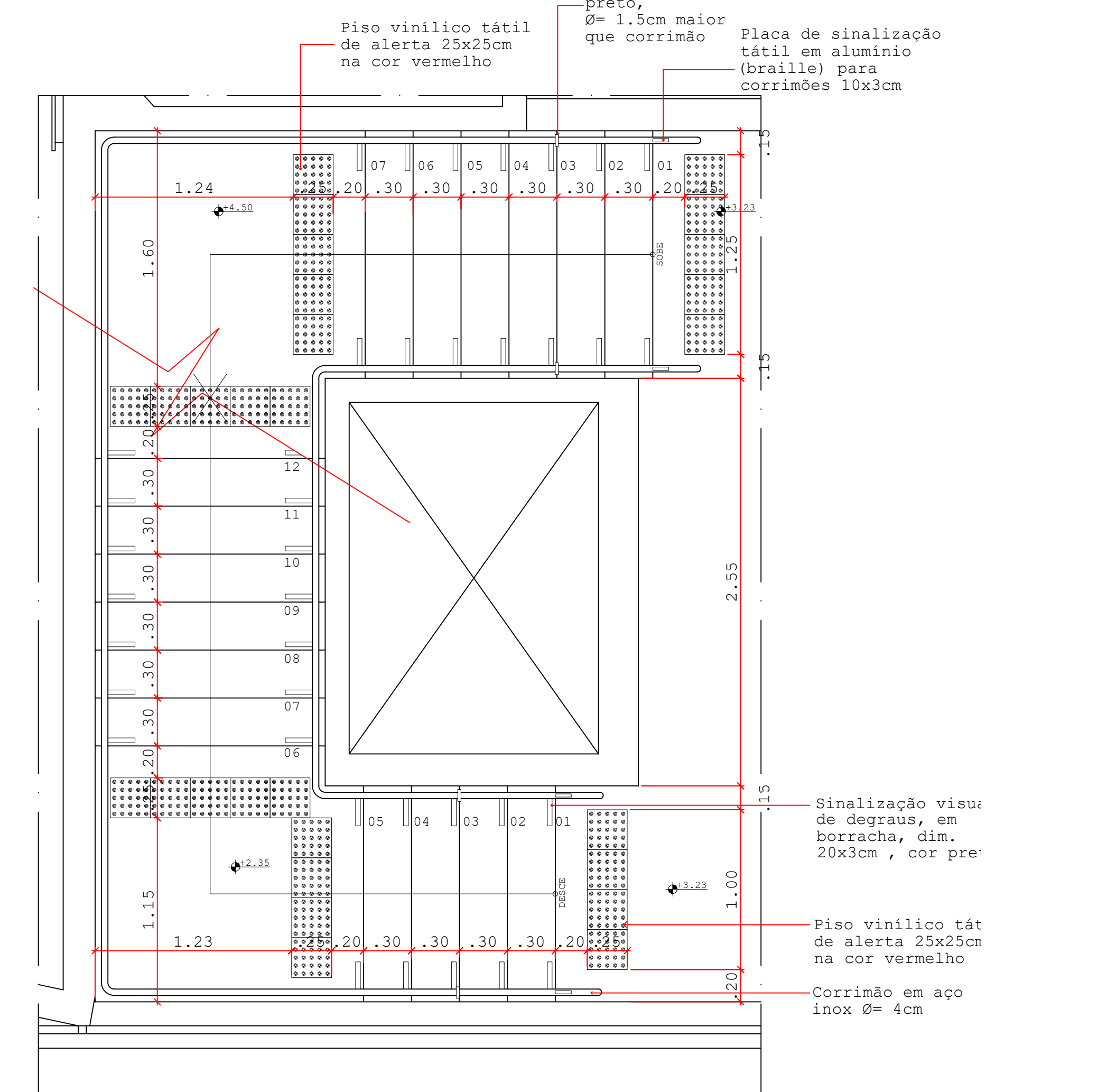
**PLANTA BAIXA DETALHE 06**  
ESC. 1/25



**PLANTA BAIXA DETALHE 09**  
ESC. 1/25



**PLANTA BAIXA DETALHE 08**  
ESC. 1/25



**PLANTA BAIXA DETALHE 12**  
ESC. 1/25

**ABRANGENTE**  
ENGENHARIA & ARQUITETURA

AUTORA DO PROJETO: **GISELE MAIA - ARQUITETA** (CAU/MT 42189-9 - CAC 9061) RESPONSÁVEL TÉCNICO

PROPRIETÁRIO: INSTITUTO FEDERAL DE EDUCAÇÃO, CIÊNCIA E TECNOLOGIA DE MATO GROSSO (LOCAL: TERRA - RUA ZULMIRA CANAVARROS, ESQ. COM RUA MARECHAL FLORIANO PEIXOTO, Nº 95, BAIRRO CENTRO, CUIABÁ-MT)

TIPO DE OBRA: PROJETO EDUCACIONAL

PROJETO: ACESSIBILIDADE

DETALHE 06, 07, 08, 09, 10, 11, 12 E 13

ESCALA: INDICADA DATA: SETEMBRO/2015 CDD: OBRA DISCIPLINA: FASE: REVISÃO: COLABORADOR: SAUNDARA

FOLHA: **03/03**

Fone/Fax: 65 3644 8974  
projeto.abrangente@gmail.com  
www.abrangente.com.br